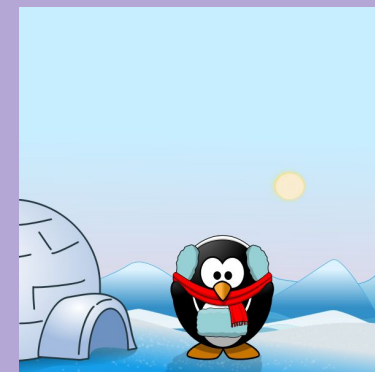




January 15 - 19, 2024



*Subject to change.

Reading	Spelling	Grammar/Writing
<ul style="list-style-type: none">★ Unit 3: Weeks 1 and 2 Comprehension Test: Tuesday★ TDA	<ul style="list-style-type: none">★ Unit 3: Week 2: silent letters★ Test: Friday, January 19	<p>Grammar:</p> <ul style="list-style-type: none">★ Nouns★ Common and Proper Nouns★ Plural nouns <p>Writing:</p> <ul style="list-style-type: none">★ New Year's Writing

IMPORTANT REMINDERS:

- ★ Please check your Daily Folder and Planner for important information
- ★ Remember to check the Countdown to Christmas Dress Up Calendar
- ★ January 15: Teacher in Service: No School for Students
- ★ January 18: End of Grading Period
- ★ Monday, January 22: Report Cards go Home
- ★ January 25: LOT Event
- ★ February 2: Science Fair

Mrs. Sarver's LESSON PLANS

Week of January 15 - 19, 2024



	Reading	Spelling	Grammar/Writing
MON. 1/15	<div style="border: 2px solid black; background-color: black; color: white; padding: 10px; width: fit-content; margin: 0 auto;"> <p>NO SCHOOL TEACHER INSERVICE DAY</p> </div>		
TUES. 1/16 Day 6: Library C	<p><u>OBJECTIVES:</u></p> <ul style="list-style-type: none"> To assess comprehension <p><u>ACTIVITIES:</u></p> <ul style="list-style-type: none"> Complete "Aguinaldo" comprehension test <p><u>EVALUATION:</u></p> <ul style="list-style-type: none"> Collect and grade tests 	<p><u>OBJECTIVES:</u></p> <ul style="list-style-type: none"> To spell grade level words <p><u>ACTIVITIES:</u></p> <ul style="list-style-type: none"> Give practice test Complete spelling word sort for homework <p><u>EVALUATION:</u></p> <ul style="list-style-type: none"> Student participation and response 	<p><u>WILSON</u></p> <p><u>OBJECTIVES:</u></p> <ul style="list-style-type: none"> To identify common and proper nouns <p><u>ACTIVITIES:</u></p> <ul style="list-style-type: none"> Check concrete and abstract nouns paper Work in Noun packets with a partner <p><u>EVALUATION:</u></p> <ul style="list-style-type: none"> Student participation and response
WED. 1/17 Day 1: Gym A Rooms and Halls	<p><u>OBJECTIVES:</u></p> <ul style="list-style-type: none"> To complete TDA <p><u>ACTIVITIES:</u></p> <ul style="list-style-type: none"> WORK on rough draft of Aguinaldo TDA <p><u>EVALUATION:</u></p> <ul style="list-style-type: none"> Student participation and response 	<p><u>OBJECTIVES:</u></p> <ul style="list-style-type: none"> To spell grade level words <p><u>ACTIVITIES:</u></p> <ul style="list-style-type: none"> Practice words <p><u>EVALUATION:</u></p> <ul style="list-style-type: none"> Student participation and response 	<p><u>SARVER</u></p> <p><u>OBJECTIVES:</u></p> <ul style="list-style-type: none"> To assess common and proper nouns <p><u>ACTIVITIES:</u></p> <ul style="list-style-type: none"> Complete common and proper noun test <p><u>EVALUATION:</u></p> <ul style="list-style-type: none"> Collect and grade tests

Mrs. Sarver's LESSON PLANS

Week of January 15 - 19, 2024

	Reading	Spelling	Grammar/Writing
THURS 1/18 Day 3: LOT B Rooms and Halls	<u>OBJECTIVES:</u> <ul style="list-style-type: none"> To complete TDA <u>ACTIVITIES:</u> <ul style="list-style-type: none"> WORK on rough draft of Aguinaldo TDA <u>EVALUATION:</u> <ul style="list-style-type: none"> Student participation and response 	<u>OBJECTIVES:</u> <ul style="list-style-type: none"> To spell grade level words <u>ACTIVITIES:</u> <ul style="list-style-type: none"> Complete word meanings worksheet for homework <u>EVALUATION:</u> <ul style="list-style-type: none"> Student participation and response 	<u>BOWER</u> See Wednesday
FRI. 1/19 Day 4: Music C Rooms and Halls	<u>OBJECTIVES:</u> <ul style="list-style-type: none"> To complete TDA <u>ACTIVITIES:</u> <ul style="list-style-type: none"> Work on good copy of TDA <u>EVALUATION:</u> <ul style="list-style-type: none"> Student participation and response 	<u>OBJECTIVES:</u> <ul style="list-style-type: none"> To assess Unit 3, Week words <u>ACTIVITIES:</u> <ul style="list-style-type: none"> Give Unit 3, Week 1 test <u>EVALUATION:</u> <ul style="list-style-type: none"> Student participation and response 	<u>WILSON</u> See Wednesday

*Lesson Plans meet requirements of the Rockwood Area School District Curriculum & PA State Standards for 4th Grade.

*Accommodations & Modifications included but not limited to: follow IEPs & GIEPS, differentiated instruction, preferential seating, opportunities for intervention or enrichment, & challenge activities at teacher's discretion.

Lesson Plans are subject to change!